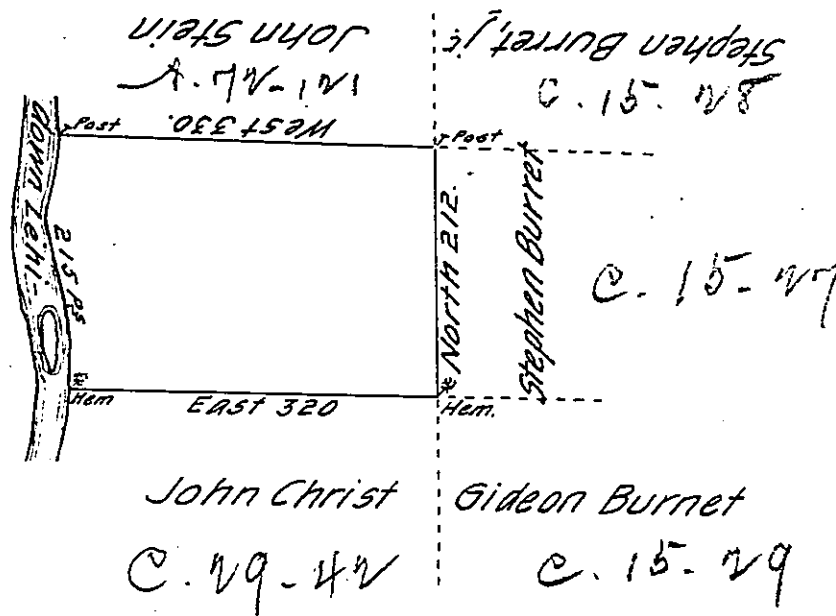


Bearing and distance -
down Lehi -

- 1. South 30
 - 2. 510 W 22
 - 3. South 36
 - 4. 513 E 88
 - 5. 510 W 39
-
- 215-



By Virtue of a Warrant dated the 3^d April 1792, Surveyed the 31st August 1793 to William Horsefield the above described tract of land, situate on the East side of Lehi in the County of Northampton, Containing four hundred and six Acres and the Allowance of Six p. Cent &c^e

Geo. Palmer, D.S.

To Daniel Brodhead, Esq^r }
 Surveyor General. }

IN TESTIMONY that the above is a copy of the original remaining on file in the Department of Internal Affairs of Pennsylvania, made conformably to an Act of Assembly approved the 16th day of February, 1833, I have hereunto set my Hand and caused the Seal of said Department to be affixed at Harrisburg, this fourteenth day of April 1905.

Lawrence N. Brown
 Secretary of Internal Affairs.